

BEAUVALLON HOSTELLERIE



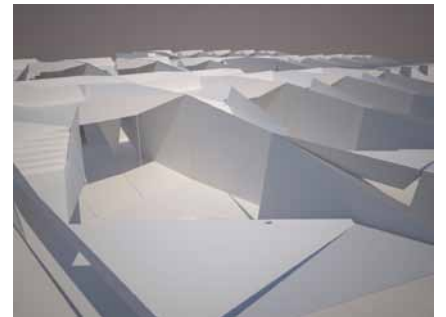
bedroom
overview

Beauvallon Hostellerie, St Maxime, France

The project adjacent to the Beauvallon Hotel consists of 16 units which are connected by a communal pool on the upper level. 2 bedrooms and a living area are arranged around internal courtyards and pools, a staircase leads up to the private terrace space above.



Client: Parkview International
Status: planning



arrangement of suites
single suite



bird's eye view with the communal pool
private pool of the suite

